

Little Aston

Shenstone

Stonnall

Parish Council News

25C Main Street, Shenstone WS14 0LZ
 Tel: 01543 481 947
www.shenstone-staffs.gov.uk
 e-mail: admin@shenstone-staffs.gov.uk



Summer 2022

ALL THE NEWS FROM YOUR PARISH COUNCIL



THE QUEEN'S
 PLATINUM JUBILEE
 BEACONS
 2ND JUNE 2022

On 2nd June 2022, we will celebrate another unique milestone in our history, Her Majesty The Queen's 70th year as our Monarch and Head of the Commonwealth - her Platinum Jubilee. It is a feat no previous monarch has achieved. More than 1,500 beacons will be lit throughout the United Kingdom, Channel Islands, Isle of Man and UK Overseas Territories, and one in each of the capital cities of Commonwealth countries in recognition of The Queen's long and selfless service. The beacons will enable local communities, individuals, and organisations to pay tribute to her as part of the official Platinum Jubilee Weekend of celebrations from 2nd to 5th June 2022.

To join in this important event a beacon will be lit from the tower of St John the Baptist Church, Shenstone. The lighting of the beacon will be **9.45pm**. To mark this occasion further residents are invited to gather on the glebe from **9.15 pm** where refreshments will be served.

The Parish Council are delighted to support community groups who wish to organise events to mark a weekend of celebrations with street parties. To apply for funding please contact admin@shenstone-staffs.gov.uk. Two recent applications are detailed below:

In Stonnall, a giant screen has been hired to show the Jubilee Concert broadcast on Saturday 4th June.

In Shenstone, residents are invited to the library coffee shop for a complimentary cup of tea/coffee and a slice of cake. This "open house" event will start at 1.00pm and finish at 4.00 pm (last orders 3.30pm) on Saturday 4th of June. Please feel free to drop in at any time between those hours.

There are many other party plans across the Wards. Let's hope for fine weather and a celebration to remember.



Shenstone Westgate Practice Branch Re-opening

Residents will be aware that the Parish Council & our local M.P. Christopher Pincher have been working hard to re-open the surgery in Shenstone. There was an extremely well-coordinated petition by residents which also added its weight. So, we are delighted to receive notice from The Westgate Practice that having reviewed the operational strategy they now feel that with continuing safety measures in place they can **re-open the Shenstone Branch site from Monday 4th April 2022 to patients.**

As part of the initial re opening, please note changes to opening times and operating services:

- The Shenstone branch will be open each day Monday – Friday from 8.00 am – 1.00pm.
- All appointments will still need to be booked either online or by telephoning the practice on 01543 416633. There will be no facility to physically call in and book appointments at the Shenstone branch. This is the same as our Greenhill Site.
- The Shenstone branch will be unable to take requests for prescriptions. These can be done on line or via the local Pharmacy.
- A range of services will be rolled out over the next few months, including appointments with GPs, Advanced Nurse Practitioners and Practice Nurses. These clinics will vary from week to week, depending on the availability of staff. Please be aware that staff are still required to isolate in accordance with the NHS Covid rules if testing positive and are still required to socially distance. This is to protect vulnerable patients.

As a reminder most services can be accessed remotely online; by telephone or via the website www.westgatepractice.co.uk

Friends of Shenstone Station 1884

Since my last report to the Parish Council the group has been relatively quiet. We purchased two planters and compost to fill them with winter flowering plants. At the bottom we added heavy stones, so they can't be moved easily, and mid-way we put in some spring bulbs, which are just emerging. These planters frame the entrance to the ticket office. The bulbs on the bank are beginning to emerge too. The group hoped to plant some trees on the bank, but Network Rail who own the bank and West Midland Railways who lease it from them, were unable to grant permission for this. Our next big project is



to cover the two scarred walls on Platform 2 (next to the bike racks) with a mural created by local artist, Anatomix. She painted the Wylde Green Fox. We have been working closely with the adoption group at Wylde Green and the newly formed group at Chester Road. It is hoped that all the stations on the Cross City Line North will have a wild-life mural reflecting their communities. We hope that the Shenstone mural will be in place for the Queens Jubilee, failing that, the Village Festival. Lichfield Rock Choir sang at the station in early December and was well received by the audience that came to watch. We would like to repeat the event in December 2022 along with a Christmas Tree Festival on the station platforms. The collection for St Giles Hospice raised £163.10.

We have plans for two more planters, one on each platform, however, finding something heavy enough, narrow enough and sturdy enough to meet the exacting standards of WMR is proving very difficult. We also have a plan to seed the bank with meadow flowers. However, until we can guarantee that they won't be cut down or strimmed by Network Rail or WMR staff we're a little reluctant to go ahead at this time.

If anyone is interested in joining our group please contact Jane Arnstein on

Shenstation1884@gmail.com

Over £21,000 awarded in Community Grants

The Parish Council are pleased to announce that this year saw a record number of applications for grant funding with all requests approved totalling just over £21,000.

Successful applicants from Shenstone include the Village Hall who asked for funds towards new curtains & blinds; the Playing Fields with a grant towards new perimeter fencing and the Tennis Club who asked for a noticeboard & lockable storage. Fotherley Hall received funds for the purchase of a recliner chair.

In Stonnall funds went to 1st Stonnall Scouts for camping equipment, speakers & music for Stonnall Singers & funds to purchase new kit, footballs & equipment to Stonnall Juniors Football Club as well as grants to other community groups in the village.

Little Aston Tennis Club received funds towards an automated irrigation system.

Rural Communities Energy Fund Feasibility Study

The Shenstone and Stonnall Feasibility Study to assess (i) the potential for reducing carbon emissions from existing buildings and homes and (ii) explore the options for village renewable energy generation, is now underway. The appointed consultants Bioregional are setting up a website to explain who they are and what they will do and answer any questions, details of that are elsewhere in this Newsletter. The Parish Council has formed a Working Group with several additional Shenstone resident co-opted members. Residents from Stonnall who are interested in the study would also be welcome. Bioregional have met a small number of landowners, community building managers, utility companies and commercial building interests to begin assessing the two study objectives described above and in the next few weeks a household questionnaire will be distributed. There will be consultation events in coming months and the final Feasibility Study report is expected around the end of June.

A message from Bioregional

Shenstone Parish Council has been successful in obtaining a grant from the Rural Community Energy Fund (RCEF). The grant will be used to examine the feasibility of reducing carbon emissions caused by heating buildings, and explore the options for renewable energy generation within the Parish.

Bioregional – a charity with over 20 years' experience in zero-carbon homes – has been commissioned to carry out the study. Bioregional is joining forces with energy consultants and district heating specialists Fairheat and ICAX, to assess the viability of a community-scale zero-carbon heating solution, and how best this might be developed. Together, we have expertise working with local communities – including other RCEF projects – to deliver renewable and low carbon heating strategies, helping communities become leaders in the move away from reliance on fossil-fuel based systems. Over the next few months we will be working with the community to conduct the feasibility study, starting with a site visit on Monday 28th March. We have several meetings set up that day, including taking a look at decommissioned water infrastructure including a pumping house and boreholes. Our technical partners will participate in this day, as the initial site walk-around is crucial to refining the project's scope.

We will shortly be launching a project website which will provide information and help engage local people with the study, and the Parish Council will also use its media channels to keep residents informed. Once the initial study has been completed we will host a community workshop to present and discuss the findings, hear your views, and begin to explore the possibilities moving forward. We're really looking forward to getting started on your project!

Do you struggle with using your computer or tablet?

Here in Shenstone Community Library, we are so lucky to have a wonderful volunteer who is just waiting to help.

Each Wednesday, Geoff waits to help out with any of your computer queries. It doesn't matter how small or large- we've all been there when the machine does something unexpected. Or perhaps, you've not used a certain app or function for a while and need a nudge in the right direction.

Geoff also volunteers at Sutton library where his time is filled with those wanting help and we are so fortunate that he volunteers here in Shenstone too. No appointments are needed here, just turn up with your queries and he will help, sitting with you as long as necessary or send you off in the right direction if it is a hardware problem.



Community Governance Review

Lichfield District Council are currently undertaking a review of community governance arrangements (i.e. arrangements at the parish level) throughout the district. A governance review is usually every 10 to 15 years and provides an opportunity to review parishes and make changes to local arrangements. Good community governance arrangements contribute to improved local democracy, greater community engagement and better local service delivery.

Key issues looked at are the identities and interests of the community, community cohesion, effective governance and whether the size, population and boundaries make sense. The review can consider:

- Creating, merging, altering or abolishing parishes.
- Naming of parishes and determining the style of parishes
- Electoral arrangements including council size
- Grouping parishes under a common parish council
- Other types of local arrangements such as parish meetings.

The consultation period runs until 25th April 2022 and views are invited from residents and interested parties. To share your views on Shenstone Parish Council please complete the online submission form at:

www.lichfielddc.gov.uk/custom/consultations/open

Bee Friendly Initiative

Over the course of this year the Parish Council will be applying to become a 'Bee Friendly' Parish. This exciting project will feature a number of ongoing projects designed to encourage as many of us as possible to appreciate and treasure bees and the impact they have on the environment. Launched in 2021, the Bee Friendly initiative hopes to transform our towns, cities and villages alike into nature spaces and habitats. Awarded annually, we hope to achieve the status in 2023 by involving as many people as possible in Bee Friendly activities such as:



- Bee Friendly Garden Status – satisfy some simple criteria and achieve our specially commissioned Bee Friendly logo to display outside your house (All ages)
- Make seed bombs of Bee Friendly flowers and sow them around the villages (5 – 11 years)
- Make homes for wildlife following simple online guidance to be posted on the PC website (9 – 15 years) e.g. a Bumblebee pot or a bee hotel
- Go organic in your garden. Insecticides kill insects. (All years)
- Add water, (however small your container) to your garden. (All years)
- Share seeds using Shenstone Community seed bank or set up your own 'share'

Look out for more events over the course of the year. If you are interested in hosting an event either at your home or in your village, please contact Shirley (Parish Clerk) in the Parish office.

Greysbrooke School and Rainbows Tree Planting

Just before Christmas every pupil at Greysbrooke School planted a tree whip on land kindly prepared by Lichfield District Council and local farmer Chris Able. The planting was a huge success, and children were encouraged to mark their tree with an individual stone arrangement so that they can monitor its progress. The area is now easily spotted because of the beautiful hand-crafted marker that indicates the plantation and year group markers identifying classes.

On Friday 18th March Shenstone Rainbows group created another small plantation with a further 30 whips containing a variety of native trees including Silver Birch, Alder, Blackthorn and Hawthorn. Each tree is named and is easy to spot.



As we go to print 40 more trees will be planted by the pupils from Greysbrooke who, due to the COVID outbreak, were not in school before Christmas.

This will bring the total number of trees provided by the Woodland Trust, planted on the Lammas land over the last 4 years, to approximately 500. The vast majority of these have survived and the fastest growing are now well over 2 meters tall – quite an achievement!

Village Electric Charging Points

The Parish Council is inviting village hall management organisations and playing field management organisations in Little Aston, Stonnall and Shenstone as well as the Shenstone Community Library to explore the potential of the Office for Zero Emission Vehicles (OZEV) government grants to install electric vehicle charging points in their car parks.

There are two types of potential grant the first of up to 13.5k for the installation costs of each 'on street' charging point and secondly grants of up to £14k for charities and other community organizations to install 'workplace' charging points. There are strings attached in relation to village resident access to the charging point and deadlines and a viable 'on street' application needs to be eventually made via a Parish Council. The Energy Saving Trust is working with government to assist all applicants with free advice about all initial ideas or proposals.

The government web site explaining the grants further and the Energy Savings Trust support can be located on Gov.UK. OZEV web site.

Friends of Shenstone Tower

Shenstone's old church tower is in the middle of its restoration. If you walk across the graveyard, you can see the scaffolding and the masons repairing the stonework. This is all going very well, apart from storm Eustace who removed a number of the protective sheets from the scaffolding! As the restoration has proceeded, we have found a few more challenges than expected: tonnes of pigeon guano inside the tower, some key stones above a window missing, etc. For example, we have had to install more steel beams than planned to ensure the stability of the tower for the future. This is all positive as the tower will be strong enough to stand for a long time to come, but it does mean that we will over-run our programme by 3 months: instead of completing in late March it will complete in late June. We have taken the decision to delay the official opening to 8th October at 2pm – you are all welcome to come and see the opening. We will also have a display adjacent to the Tower on Saturday afternoon of Shenstone's festival, 2nd July, but no-one will be able to go inside the tower; please come and have a chat with us then and see us again at the opening!

Friends of Shenstone Tower had some good news recently, our charity has been accepted as part of the Lichfield Community Lottery. More Tower news! We are very pleased with the progress of the renovation of the tower, the stonework is looking good and very soon the staircase will be constructed. We still need to raise funds for the fitting out of the tower when the renovation is complete, the pathway to the tower, information boards and benches. If you are considering buying lottery tickets, please help to give our fundraising a boost with Lichfield Community Lottery. You will have the chance to win £25,000 and many other prizes.

If you would like to support us in this way, please go to <https://www.lichfieldcommunitylottery.co.uk> and search for Friends of Shenstone Tower.



Tower at sunset

Community Speed Watch

The Parish Council are looking to re-instate the Community Speed Watch initiative which was extremely successful in combating speeding on our roads prior to it having to cease working when lockdown hit us two years ago.

Our PCSO Andrea Horsnall has been delivering leaflets and invitations to join the scheme through many letterboxes around the villages in an effort to gain community support and enlist people willing to spare a little time to operate the roadside equipment and help make our roads safer.

A training session for volunteers will be being organised soon.

If you are interested in supporting this venture please contact the Parish Clerk on 01543 481947 or the PCSO directly: andrea.horsnall@staffordshire.police.uk

Traffic Issues

Several residents have expressed concern via email, letter and telephone, about the perceived increase in the speed of traffic through certain parts of our villages, in particular, the A5127 through Shenstone Woodend and also along the adjoining Blake Street.

Many have also asked if something can be done to make crossing at the Blake Street/Little Aston Lane crossroads easier and safer for the numerous pedestrians who use the shops there and also cross all sections of the junction on their journeys to and from local schools or to commute to the railway station.

The County Council Highways department are aware of the issues and the Parish Council will do all it can to try to ensure that the safety of its community is a priority.

L.A.R.G.A.

The Little Aston Recreation Ground Association and the users of the facility are extremely grateful to Shenstone Parish Council for its generous



granting of the CIL award money which has covered the cost of the purchase and installation of a new piece of equipment on the site. It is an 'Inclusive Orbital' which is a roundabout, set flush with the ground and has provision for wheelchair use. It is now just awaiting installation of its safety surfacing before being made available for children to enjoy.

As a Charity we rely on donations to help maintain and support the facility and are extremely grateful for the support we receive in the form of cash donations in our donation boxes, regular monthly contributions and donations via the Lichfield Lottery scheme, Amazon Prime and JustGiving. This support has been particularly invaluable during the pandemic and the challenges faced by the Charity over the past couple of years.

Stonnall Campaign about Roads (SCAR)

Stonnall Campaign About Roads (SCAR) has been instrumental in improving road safety matters in the Stonnall area and has had some good success over the past few years.

SCAR is looking to increase its Campaign Committee members for some issues that now face the Village.

In particular the proposals by Walsall Council to allow building of c2000 properties in the green belt near Cartersfield Lane is a major concern for the adverse effect this will have on Stonnall. It will resemble a development the size of the new build sites around Lichfield!

SCAR has a meeting on Tuesday 5th April 2022 at 7.30pm in The Youth Hut to discuss this matter.

In addition SCAR's Annual General Meeting is set for Wednesday 11th May 2022 in the Youth Hut at 7.30pm.

If you value and want to preserve the village environment that we live in, it would be good to see anyone from the Village area at those meetings.

Jubilee Walk

The Bee Friendly Initiative in conjunction with Shenstone Parish Council Queen's Jubilee Fund, Shenstone Community Library, and the Sakura Cherry Tree Project are very pleased to announce the exciting start to a year of Bee Friendly Events and activities, across the parish, with the ceremonial planting of 8 Sakura bee friendly cherry trees on Shenstone's popular Lammas Land.

A special "street plaque" christening the walkway from Millbrook to the Lammas Land will be erected soon creating "Jubilee Walk".



Calling all Knitters & Crocheters

Would you be interested in joining a Yarn Bombing Project starting at Shenstone Station & hopefully spreading throughout the community? Yarn bombing is a type of graffiti or street art that employs colourful displays of knitted or crocheted yarn or fibre rather than paint or chalk. It is also called wool bombing, yarn storming, guerrilla knitting, knifitti, urban knitting, or graffiti knitting. The hope is to get some colourful displays in time for the Jubilee celebrations. If you are interested, please contact Jane at shenstonestation1884@gmail.com

Shenstone Tennis Club



We are very grateful to the generosity of the Shenstone Parish Council Community Grant Fund in providing storage boxes, padlocks and noticeboards for the tennis club. They will take pride of place on our courts when they are re-surfaced in the autumn. Fundraising continues as we still need to meet the costs of the re-surfacing. Then we will turn our attention to fundraising for re-fencing and the addition of a lighting system. So far we have hosted a successful event every month – a Ceilidh in January; a quiz in February, Beer and Skittles at Wall for March. In April the Village Hall will become a Gin Palace and Variety Hall as we host Lichfield Rock Choir and the award winning play Sexy Lamp, written and performed by Katie Arnstein, who grew-up in the village. May will see a May Fayre in the Cooper Rooms, another quiz in June and "A Day at The Races" in November.

Further information can be found at www.shenstonetennisclub.com

Diamond Jubilee Allotment Society Shenstone - Stonnall

Your local community run allotments are celebrating 10 years! And with a new lease, we shall be around for another 10 years. Having an allotment is a terrific way to enjoy the outdoors and to grow your own delicious vegetables and fruits.

The benefits of allotments have been well proven to increase social capital, improve well-being, feel a

sense of achievement and is a healthy activity. We are a friendly bunch and welcome all from the experienced to the newbies. Plots are always coming available. With plots in a variety of sizes, there will be one to suit your needs. If you are interested in a plot, please contact Debra dnpastel@aol.com.



Our Lengthsmen

Most of you will be very aware of, and will have benefitted from, the highly successful Lengthsman Scheme that the Parish Council has been running for the past few years.

Our senior Lengthsman, Steve, has been regularly seen, usually ably assisted by his colleague, Gerry, in and around all parts of our three Wards, clearing overgrown pathways, cleaning and repairing bus-shelters and other facilities, collecting hundreds of sacks full of litter and generally keeping our area smart and tidy.

Unfortunately, Steve will be retiring in April.

His knowledge, expertise and dedication will be hard to replace but we will soon be seeing his successor stepping into the role and, with Gerry's help and guidance, they will continue making our villages a better place to live. Shenstone Parish Council sincerely thank Steve for all his work and wish him well in his retirement.

The Parish Council are delighted to welcome Nigel Hewitt, a lifelong resident of Stonnall, who will be replacing Steve, joining us on a three month contract at the end of March.

Lammas Land Footpath

A new short looped path, to the south of the information board, will be created in the very near future which will provide an additional 150 meters of footpath around a currently underused part of land. This will incorporate some natural undisturbed habitats enabling nature lovers to explore at first hand a different flora and fauna.



Little Aston Tennis Club Future Plans from 2022

Over the last 2 years Little Aston Tennis Club have made significant improvements in playing facilities.

Whilst previously the club was closed in the winter months we now have 3 all year round, top quality, professional hybrid courts. Indeed last year 4 professional tennis players used our courts for practice for the clay court season in Europe.

In addition we have had installed on one court a unique floodlighting system to allow play in the autumn, winter & early spring evenings.

We are continuing with our "Vision" to be the best small tennis club in the UK (4 courts or less). To achieve this we will need grants/partners to invest in the club as our plans are very ambitious. The "Vision" can be broken down into 2 main areas of development as follows :

1. New Clubhouse.
2. New 4th Court in acrylic using the same materials as the Arthur Ash Centre court in New York at the US Open.

Our top priority is to improve the clubhouse facilities. The existing clubhouse is an old wooden pavilion structure built the 1920's.

We are designing a new larger Clubhouse with a traditional pavilion style building so the "look" of the club will remain in keeping with the present environment. This will incorporate mens and ladies changing rooms with showers and separate toilet facilities.

There will be a galley kitchen and a lounge overlooking the 2 main match courts, with bi-fold doors opening out for viewing purposes and in addition there will be wheelchair access into the club.

The second part of our plan is to build a new Hard Court in acrylic adjacent to our "championship" court and we aim to lay the first Laykold Acrylic court in the UK, the same specification on which Emma Raducanu won the US Open in 2021. This would mean that Little Aston Tennis Club would have 2 out of the 3 Grand-slam surfaces from very humble beginnings.

With these facilities we believe the sustainability of the club will be secure for years to come as a membership nearer 150 is a possibility.

We believe that this development would potentially make Little Aston a unique "small" club with the quality of courts available, the clubhouse facilities and the surroundings. This would be a far cry from only 6 years ago when the club was going out of business with only 35 members (we have presently increased to 100) but with a vision and potential to offer high level facilities in a beautiful playing environment. Anyone interested in joining please check out our website :

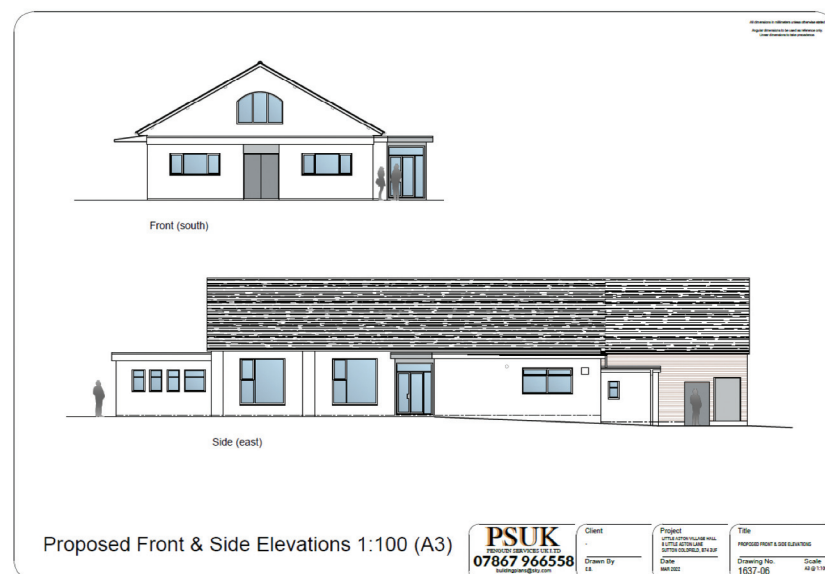
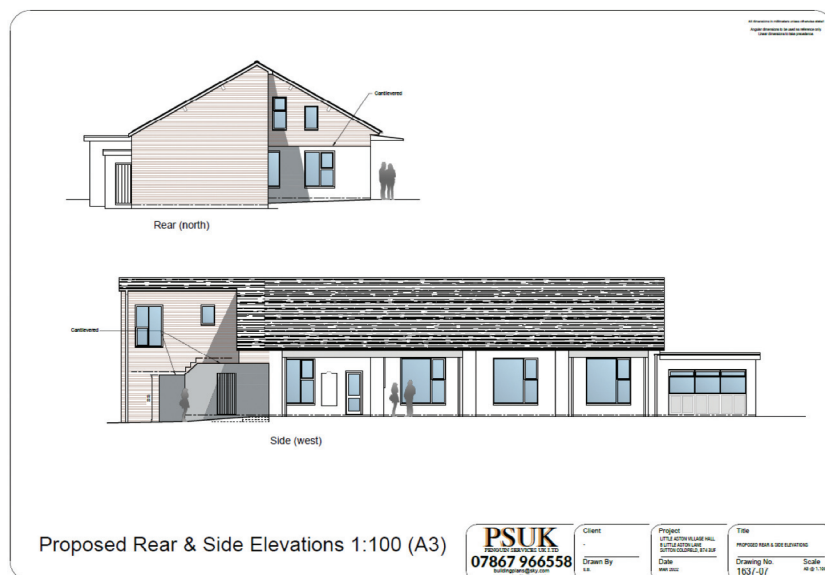
Little Aston Tennis Club or phone Peter Sutton on 07504 458 648

The Little Aston Village Hall

Throughout the whole of the last year the activities that have been possible at the Village Hall have been dominated by the effects of the COVID pandemic. As the restrictions were lifted, most of the regular users were able to resume their activities, albeit with limitations. However, as the year progressed, many of the user groups have been faced with progressively dwindling numbers of participants. The loss of participants has led to some of the user groups deciding that it was no longer viable for them to continue. In the main, this has applied to the groups who were using the Main Hall, especially those groups that operated at weekends. Thankfully, the resultant reduction in the regular income for the Hall has been offset to some extent by a surge in the number of occasional bookings, especially for children's parties. Many of these bookings were for events that were cancelled because of the pandemic.

As the pandemic continued, we were successfully able to apply for the various Government support grants that were available. This additional support has been an essential addition to the reduced income from the user groups. However, in the longer term, the Hall will need to find additional regular users.

The Booking Secretary is frequently in receipt of enquiries for the regular use of a room that is smaller than the Main Hall. However, most of these enquiries are not able to be accommodated because of the limited availability of the Committee Room during the Bowling Season. The Committee has therefore been looking at options for converting the loft space that is above the Committee Room into another room, complete with its own separate access, toilets and kitchenette. The discussions have reached the stage where a preferred option has been agreed and Architectural plans have been prepared. These will be forwarded shortly to the District Council for the necessary permissions and approvals.



Shenstone Parish Council

Members' Contact Details

SHENSTONE WOOD END / SHENSTONE WARD / LITTLE ASTON AND STONNALL WARD

- **Councillor David Salter -CHAIRMAN SHENSTONE PARISH COUNCIL**
251 Birmingham Road, SHENSTONE WOOD END, Lichfield WS14 OPD
Tel: 0121 308 4421 / mob: 07956 142215 e-mail: cllr.dsalter@shenstone-staffs.gov.uk
- **Councillor David Thompson - CHAIRMAN NEIGHBOURHOOD PLANNING & PROPERTY COMMITTEE**
19 New Road, SHENSTONE WS14 ONQ
Tel: 01543 480953 /mob: 07582 603003 e-mail: cllr.davidthompson@shenstone-staffs.gov.uk
- **Councillor Neil Perry**
57 Admiral Parker Drive, SHENSTONE WS14 ONS
Tel: 01543 480 502 / mob: 07977 210057 e-mail: cllr.neilperry@shenstone-staffs.gov.uk
- **Councillor John Branch**
40 Birmingham Road, SHENSTONE WS14 OJU
Tel: 01543 480 928 / e-mail: cllr.johnbranch@shenstone-staffs.gov.uk
- **Councillor Stuart Jones**
23 Holly Hill Road, SHENSTONE WS14 OJF
Tel: 01543 480 480/mob: 07541 089990 e-mail: cllr.stuartjones@shenstone-staffs.gov.uk
- **Councillor Lesley Edgley**
2 Admiral Parker Drive, SHENSTONE, WS14 ONS
Tel: 01543 481 861 e-mail: cllr.lesleyedgley@shenstone-staffs.gov.uk
- **Councillor Rita Hancocks**
68 Birmingham Road, SHENSTONE WS14 OJU
Tel: 01543 480 560 / mob: 0759 859 3579 e-mail: ritahancocks@hotmail.com
- **Councillor Sheila Beilby - VICE-CHAIRMAN SHENSTONE PARISH COUNCIL & CHAIRMAN FINANCE & LEGAL COMMITTEE**
Highgate House, 80 Main Street, STONNALL WS9 9DX
Tel: 01543 452 845 / mob: 07967 134268 e-mail: beilby@hotmail.co.uk
- **Councillor Gail Nicholls**
24 Main Street, STONNALL WS9 9DU
Tel: 01543 376629 e-mail: cllr.gailnicholls@shenstone-staffs.gov.uk
- **Councillor Mick Cox**
16 Wallheath Crescent, STONNALL WS9 9HS
Tel: 01543 374 869 / mob: 07968 724222 e-mail: cllr.mickcox@shenstone-staffs.gov.uk
- **Councillor Val Neale**
57 Wallheath Crescent, STONNALL, WS9 9HS
Tel: 01543 374 430 e-mail: valerieowen279@btinternet.com
- **Councillor Nicola Macdonald**
6 St Peters Close, STONNALL WS9 9EN.
Tel: 0773 650 3834 e-mail: cllr.nicolamacdonald@shenstone-staffs.gov.uk
- **Councillor Nicholas Smith**
Forge Cottage, Forge Lane, LITTLE ASTON.
Tel: 07967 016673 e-mail: skisaintefy@aol.com
- **Councillor Nicki Gobran**
LITTLE ASTON. Email: cllr.nickigobran@shenstone-staffs.gov.uk
- **Councillor Kelly Harrison**
LITTLE ASTON . Email: cllr.kellyharrison@shenstone-staffs.gov.uk
- **Parish Clerk: Shirley O'Mara, Shenstone Parish Council, 25C Main Street, SHENSTONE WS14 OLZ**
Tel: 01543 481 947 e-mail: admin@shenstone-staffs.gov.uk

COUNTY COUNCILLOR	DAVID SMITH	david.smith1@staffordshire.gov.uk
DISTRICT COUNCILLOR		
STONNALL & LITTLE ASTON	JOSEPH POWELL	joseph.powell@lichfielddc.gov.uk
DISTRICT COUNCILLOR		
STONNALL & LITTLE ASTON	ELIZABETH LITTLE	Elizabeth.little@lichfielddc.gov.uk
DISTRICT COUNCILLOR		
SHENSTONE	DAVID SALTER	David.Salter@lichfielddc.gov.uk
MEMBER OF PARLIAMENT	CHRISTOPHER PINCHER	christopher.pincher.mp@parliament.uk

Community Groups/Organisations

Contact the Parish Council on 01543 481 947 or
e-mail admin@shenstone-staffs.gov.uk

SHENSTONE

St John the Baptist Church.

Trinity Methodist Church
Shenstone Day Care (Friday Friends)
Shenstone Cares
Shenstone St John's Hall
Shenstone Village Hall
Shenstone Wesley Hall
Richard Cooper Room
Scouts Group
Women's Evening Institute
Shenstone Baby & Toddlers
Shenstone Tennis Club
Shenstone Community Library
Lammas Land Management Committee
Shenstone Pathfinders F.C.
Shenstone Playing Fields
Shenstone Painting Class
Friends of Shenstone Station 1884
Shenstone Quilters
National Women's Register
Shenstone Friends & Neighbours
Rainbow Guide Group
Footherley Club
Guides
Brownies
Shenstone Strollers
Shenstone and Stonnall men's group
Shenstone History Group
Shenstone Reading Group
Shenstone Magazine

Rev Liz Chamberlain 01543 480 286
Rev Graham Wigley 0121 352 0899
Rev Joanna Thornton 01543 253744
Rita Hancocks 01543 480 560
Debbie Farrow 01543 480 472.
Mary Wilson 01543 480 286
Tresa Rock 01543 481 504
Colin Fishwick 01543 480 618
Tresa Rock 01543 481 504
Brian Devonshire 01543 481590
Gina Whorton 01543 480 884
Amy Bull 0794 7359 786
John Branch 01543 480928
Librarian 01543 480 915
Richard Partridge 01543 481 102
Gary Cantelo 01543 480 171
Graham Jarvis 07957 377 916
Dave Upton 0121 353 5338
Jane Arnstein Arnstein.jane@gmail.com
Joy Shorey 01543 481 297
Lynne Young 01543 480 420
Cynthia Stokes 01543 480 032
Rosemary Lawrence 01543 483 437
Dave Doige 01216051252
Sarah Hardie 07946 777170
Angela Hiney-Bancroft 01543 481610
Peter Gravestock 01543 897529
Colin Fishwick 015434 80618
Bronwen Ross 01543 328 963
Community Library 01543 480915
Graham Birt 01543 483138

STONNALL

St Peters Church, Stonnall
Village News
Stonnall Village Hall
Stonnall Youth & Community Centre
Stonnall Gardeners Guild
Stonnall Coffee Club
Stonnall Players
Stonnall Rainbows
Stonnall Scouts/Beavers/Cubs
Stonnall Brownies
Stonnall Guides
Stonnall Playing Fields Management Committee
Stonnall Women's Institute
Stonnall Stitchers
Lynn & Stonnall Conservation & Historical Society
Stonnall Reading Group
Film Club
Stonnall Neighbourhood Watch
SCAR (Stonnall Campaign about Roads)
Stonnall Coffee Club
Diamond Jubilee Allotments
Stonnall Singers
Shenstone & Stonnall Men's Group
Stonnall Juniors Football Club
Stonnall History Group

Rev Liz Chamberlain 01543 480 286
Cllr Mrs Val Neale 01543 374 430
Deb Monk 07510 253 547
Nigel Cragg 07704 805 961
Pam Ramsell 01543 372 241
Val Neale 01543 374 430
Sheila Pritchard 01543 372 583
Rosemary Lawrence 01543 483 437
Marie Jenkins 07977 516 161
Angela Hiney-Bancroft 01543 481610
Sarah Hardie 07946 777170
Malcolm Beilby 01543 452 845
Jacky Morrison 01543 375 639
Ann Powell 01543 375240
Julian Ward-Davies stonnall-history-group.org.uk
Pam Osbourne
Bookings Secretary 07704 805961
Maxine Wakefield 01543 375 108
Phil Whitehouse 07887 372982
Val Neale 01543 374 430
Debbra Tullah 07787 666 932
Bob Share 01543 480 033
Colin Fishwick 01543480618
Neil 07427646657
Julian Ward-Davies stonnall-history-group.org.uk

LITTLE ASTON

St Peters Church, Little Aston
Little Aston Recreation Ground (LARGA)
Little Aston Table Tennis Club
Little Aston Pre School Play Group
Little Aston Community Association
Little Aston Village Hall
Little Aston Bowling Club
Little Aston Tennis Club
Little Aston Evening Women's Institute
Little Aston Brownies

Rev Philip Daniel 0121 352 1095
David Salter 07956 142215
Chris Flemming chris.flemming@blueyonder.co.uk
Leighsa Wack/Sara Bradbury 07950 047 172
Steve Bennett 0121 308 4947
Elisabeth Paxton littleastonvillagehall@live.co.uk
Pauline Hartland pauline.hartland5@gmail.com
Lawrence Ormond 0121 308 1254
Maura Trowman maura.trowman@yahoo.com
Emma Paxton emmapaxton@live.co.uk

USEFUL NUMBERS

Shenstone Parish Council Office: 01543 481 947
e-mail: admin@shenstone-staffs.gov.uk

Lichfield District Council : 01543 308 000 Staffordshire County Council : 0300 111 8000 Staffordshire Police: ring 101